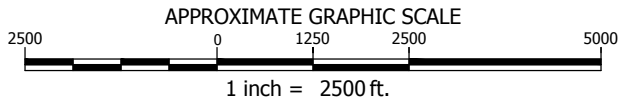


APPROXIMATE CAMU  
SITE LOCATION

APPROXIMATE GARY WORKS  
SITE LOCATION



SOURCE: IMAGE ADAPTED FROM MAPCARD GARY, IN DATED 1991.  
COPYRIGHT © 2018 WEAVER CONSULTANTS GROUP. ALL RIGHTS RESERVED.

PREPARED FOR:



### SITE LOCATION MAP

CORRECTIVE ACTION MANAGEMENT UNIT  
U. S. STEEL - GARY WORKS, GARY, IN

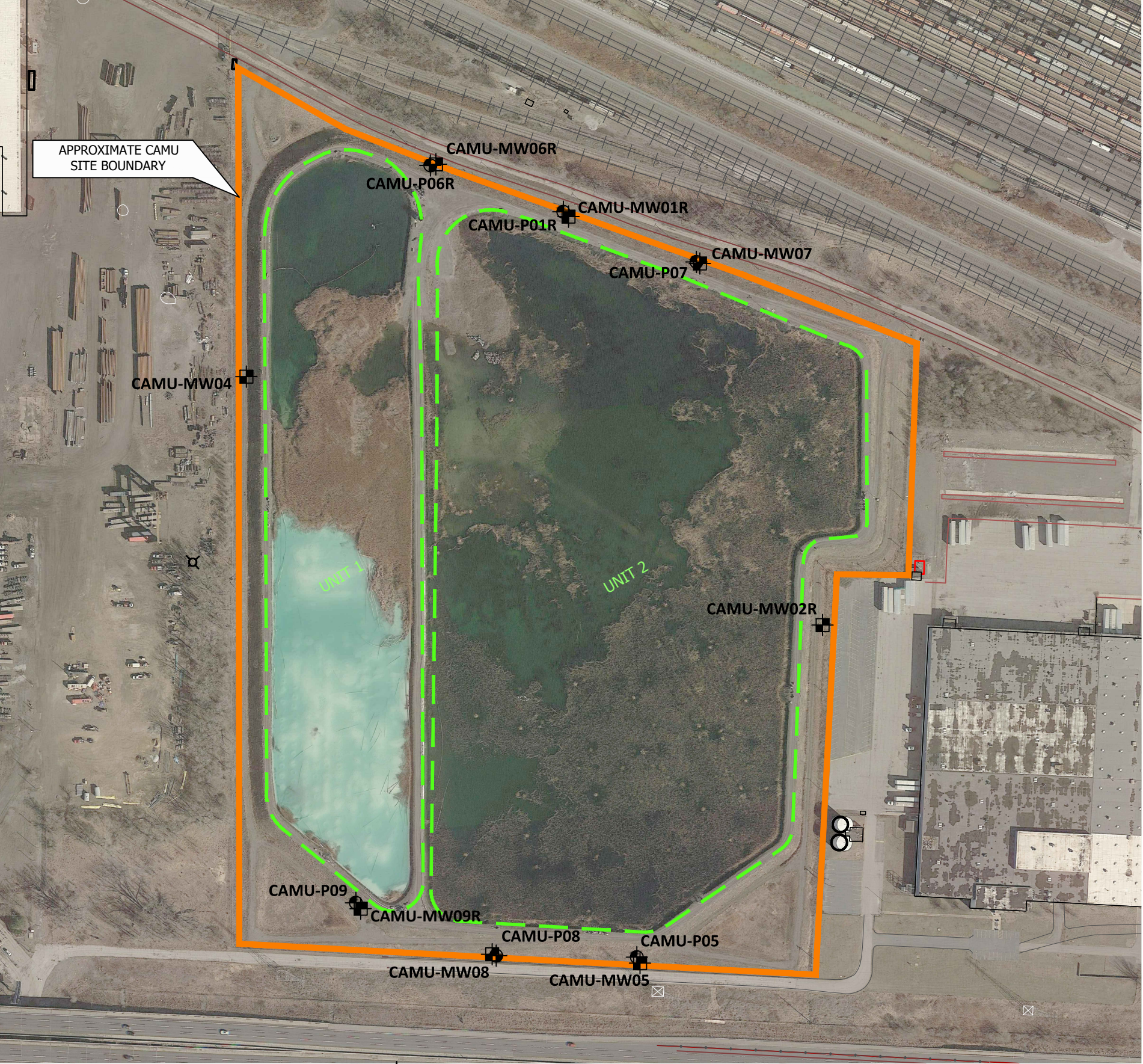
REUSE OF DOCUMENTS  
THIS DOCUMENT, AND THE DESIGNS INCORPORATED HEREIN, AS AN INSTRUMENT OF PROFESSIONAL SERVICE, IS THE PROPERTY OF WEAVER CONSULTANTS GROUP, AND IS NOT TO BE USED IN WHOLE OR IN PART, WITHOUT THE WRITTEN AUTHORIZATION OF WEAVER CONSULTANTS GROUP.



**Weaver  
Consultants  
Group**  
CHICAGO, ILLINOIS  
(312) 922-1030 [www.wcgrp.com](http://www.wcgrp.com)

DRAWN BY: RMD  
REVIEWED BY: SB  
DATE: 5/22/2018  
FILE: 1146-309-01  
CAD: site CAMU.dwg  
**FIGURE 1**

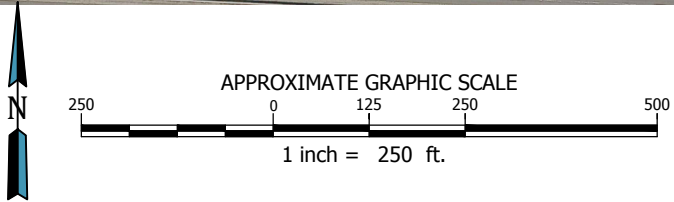




LEGEND

- CAMU BOUNDARY
- UNITS 1 & 2 BOUNDARY
- PIEZOMETER LOCATION
- MONITORING WELL LOCATION

SOURCE: IMAGE ADAPTED FROM GOOGLE EARTH IMAGERY DATED MARCH 2018.  
COPYRIGHT © 2018 WEAVER CONSULTANTS GROUP. ALL RIGHTS RESERVED.



PREPARED FOR:

GROUNDWATER MONITORING WELL &  
PIEZOMETER LOCATION MAP

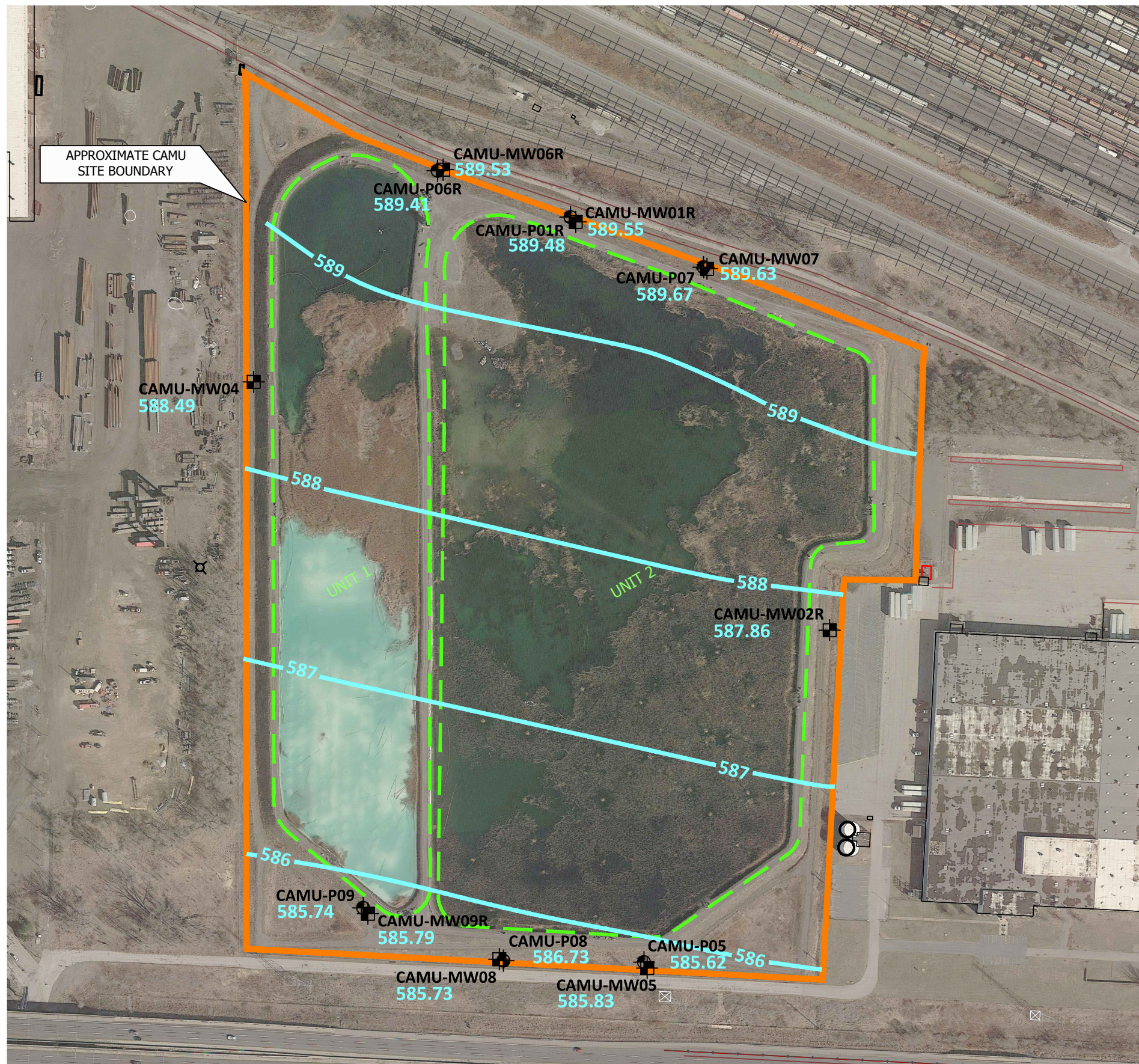
CORRECTIVE ACTION MANAGEMENT UNIT  
U. S. STEEL - GARY WORKS, GARY, IN

REUSE OF DOCUMENTS  
THIS DOCUMENT, AND THE DESIGNS INCORPORATED HEREIN, AS AN INSTRUMENT OF PROFESSIONAL SERVICE, IS THE PROPERTY OF WEAVER CONSULTANTS GROUP, AND IS NOT TO BE USED IN WHOLE OR IN PART, WITHOUT THE WRITTEN AUTHORIZATION OF WEAVER CONSULTANTS GROUP.

CHICAGO, ILLINOIS  
(312) 922-1030 www.wcgrp.com

DRAWN BY: RMD
REVIEWED BY: SB
DATE: 5/22/2018
FILE: 1146-309-01
CAD: site CAMU.dwg
FIGURE 2

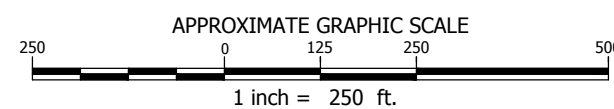




#### LEGEND

- CAMU BOUNDARY
- UNITS 1 & 2 BOUNDARY
- PIEZOMETER LOCATION
- MONITORING WELL LOCATION
- 588.32 GROUNDWATER ELEVATION
- GROUNDWATER CONTOUR

NOTE:  
GROUNDWATER ELEVATIONS ARE IN FEET ABOVE MEAN SEAL  
LEVEL. GROUNDWATER MEASUREMENTS TAKEN AUGUST 14-15,  
2017.



PREPARED FOR:



#### GROUNDWATER ELEVATION CONTOUR MAP - AUGUST 2017

CORRECTIVE ACTION MANAGEMENT UNIT  
U. S. STEEL - GARY WORKS, GARY, IN

REUSE OF DOCUMENTS  
THIS DOCUMENT, AND THE DESIGNS INCORPORATED HEREIN, AS AN INSTRUMENT OF PROFESSIONAL SERVICE, IS THE  
PROPERTY OF WEAVER CONSULTANTS GROUP, AND IS NOT TO BE USED IN WHOLE OR IN PART, WITHOUT THE WRITTEN  
AUTHORIZATION OF WEAVER CONSULTANTS GROUP.

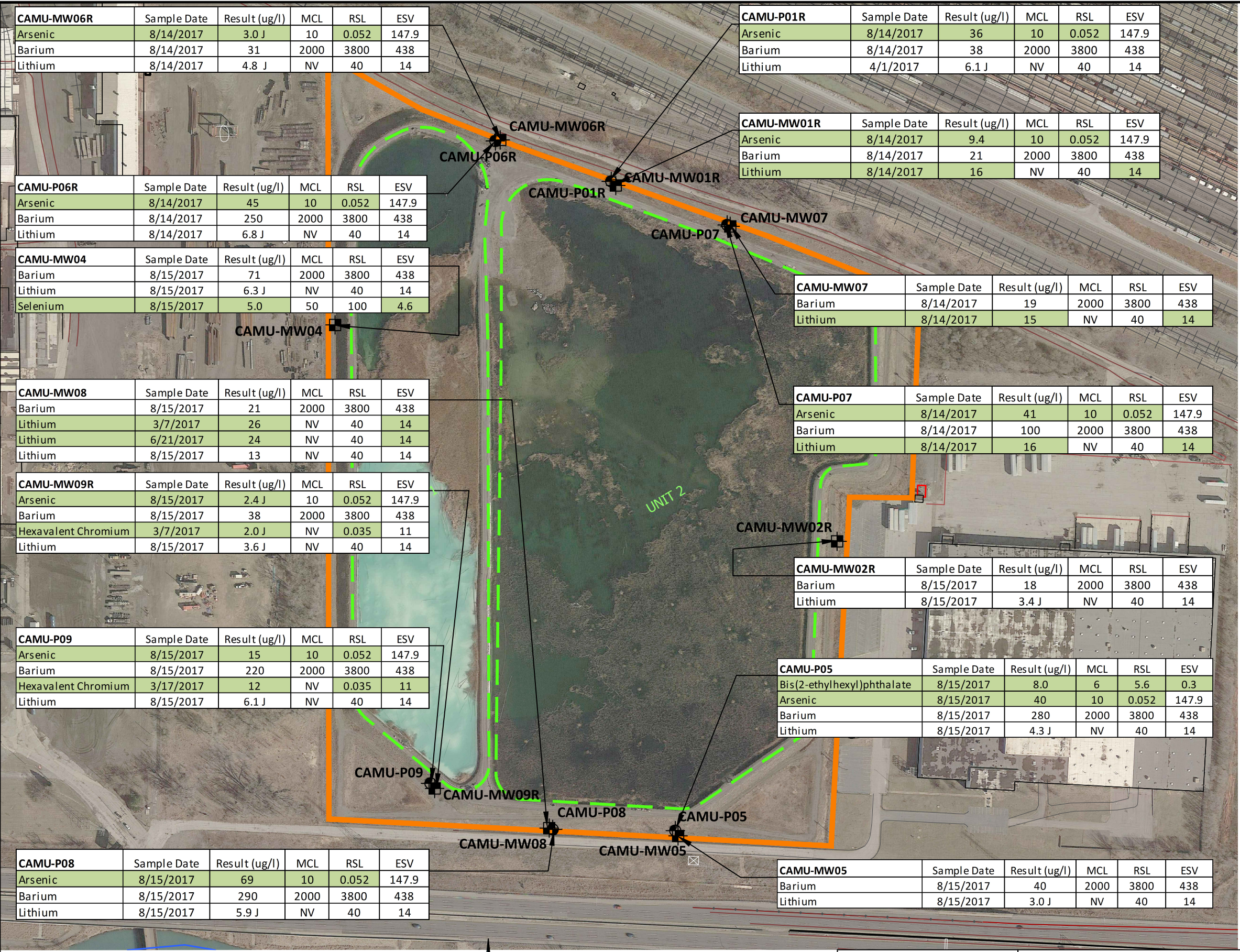


CHICAGO, ILLINOIS  
(312) 922-1030 www.wcgrp.com

DRAWN BY: RMD  
REVIEWED BY: SB  
DATE: 5/22/2018  
FILE: 1146-309-01  
CAD: site CAMU.dwg

FIGURE 3





LEGEND

CAMU BOUNDARY

UNITS 1 & 2 BOUNDARY

PIEZOMETER LOCATION

MONITORING WELL LOCATION

MCL  
USEPA MAXIMUM CONTAMINANT LEVEL  
(PRIMARY DRINKING WATER STANDARDS)

RSL  
USEPA REGIONAL SCREENING LEVEL FOR TAPWATER

ESV  
ECOLOGICAL SCREENING VALUE FOR  
THE EAST BREAKWATER AREA

J  
ESTIMATED CONCENTRATION DUE TO THE RESULT  
BEING BELOW THE SAMPLE REPORTING LIMIT OR  
QUALITY CONTROL CRITERIA WERE NOT MET.

ug/L  
MICROGRAMS PER LITER

NV  
NO VALUE

18 ug/L  
SHADED RESULTS EXCEEDS THE MCL, RCL,  
AND/OR ESV